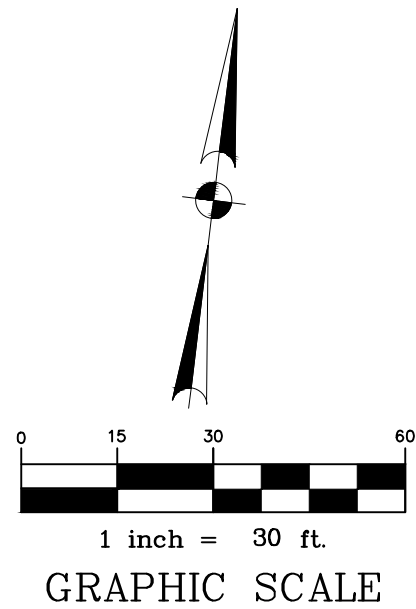


QTY.	FIXTURE TYPE OR GROUP	UNITS	TOTAL
2	BATHTUB OR COMBO BATH/SHOWER	4.0	8.0
5	LAVATORY	1.0	5.0
4	WATER CLOSET (1.6 GPF)	2.5	10.0
2	SHOWER, PER HEAD	2.0	4.0
1	CLOTHES WASHER	4.0	4.0
1	HOSE BIB	2.5	2.5
1	DISH WASHER	1.5	1.5
1	KITCHEN SINK	1.5	1.5
UPC 2006, TABLE 6-5		TOTAL RESIDENTIAL UNITS:	36.5
Developed length from the meter to the most remote outlet:		655 ft.	
Difference in elevation between meter and the highest fixture:		19 ft.	
- One and one-half inch (1.5") service lead provided to each house from street service.			

PIPE MATERIAL
PROPOSED WATER LINES:
8" WATER LINE - C900 PVC
6" WATER LINE - C900 PVC
4" WATER LINE - C900 PVC
1.5" WATER LINE - SCHEDULE 40 PVC
PROPOSED SANITARY SEWER LINES:
8" SANITARY SEWER LINE - SDR 26
6" SANITARY SEWER LINE - SCHEDULE 40 PVC
3" FORCE MAIN - SOLID WALL PE PIPE (PRESSURE RATING 150 PSI)

KEYED NOTES	
① PROP. 12" x 8" TS&V	⑬ PROP. CLEANOUT
② PROP. 6" COMBO FIRE & DOMESTIC VAULT	⑭ PROP. 6" SERVICE LEAD @ 1.00%
③ PROP. 8" x 8" TEE	⑮ PROP. 8" x 6" WYE
④ PROP. 8" x 6" TEE	
⑤ PROP. 6" STANDARD FIRE HYDRANT ASSEMBLY	
⑥ PROP. 8" x 4" REDUCER	
⑦ PROP. 8" x 4" CROSS	
⑧ PROP. 8" x 1.5" TEE	
⑨ PROP. 4" x 1.5" REDUCER	
⑩ PROP. 4" x 1.5" TEE	
⑪ PROP. 4" x 1.5" REDUCER	
⑫ PROP. 1.5" 45° BEND	
⑬ PROP. 1.5" LEAD W/ CURB STOP	

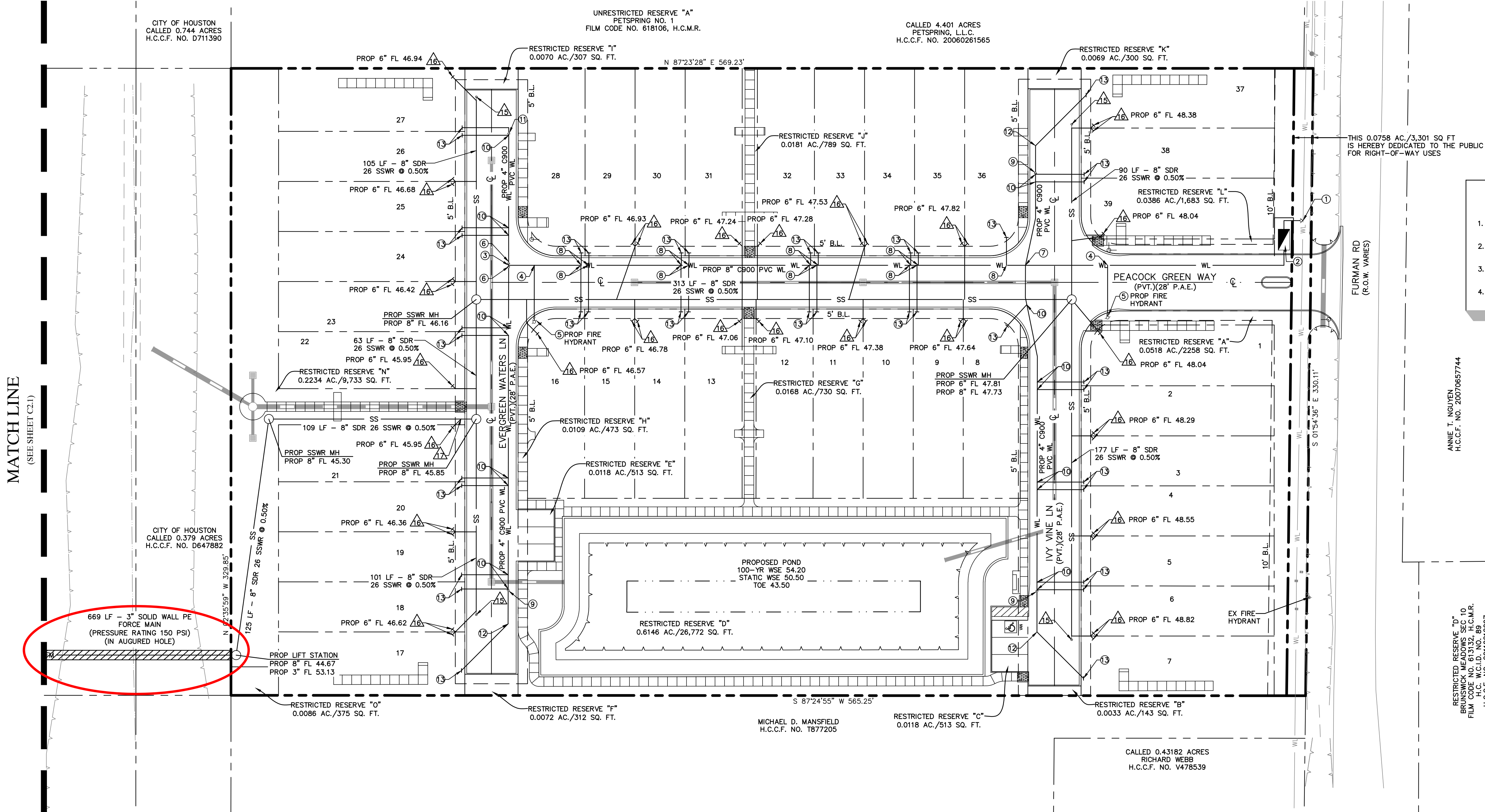


BENCHMARK:  
ELEVATIONS SHOWN HEREON ARE BASED ON HARRIS COUNTY FLOODPLAIN  
REFERENCE MARK NO. 030081 LOCATED ON TOP OF SOUTHEAST CORNER OF  
NORTH BOUND HIGHWAY 288 BRIDGE OVER SIMS BAYOU APPROXIMATELY 0.27  
MILE NORTH OF W. OREM DRIVE WITH A PUBLISHED ELEVATION OF 51.29 FEET.  
ELEVATION = 51.29' (NAVD 88, 2001 ADJUSTMENT)

TEMPORARY BENCHMARK "A":  
BEING A COTTON SPINDLE IN POWER POLE LOCATED APPROXIMATELY 63' NORTH  
OF AND 48' EAST OF THE SOUTHEAST CORNER OF THE SUBJECT TRACT.  
ELEVATION = 56.40' (NAVD 88, 2001 ADJUSTMENT)

TEMPORARY BENCHMARK "B":  
BEING A 1/2" IRON ROD (STAMPED "JONES/CARTER") LOCATED ON THE WEST  
LINE OF THE SUBJECT TRACT, APPROXIMATELY 47' SOUTH OF THE NORTHWEST  
CORNER OF THE SUBJECT TRACT.  
ELEVATION = 53.98' (NAVD 88, 2001 ADJUSTMENT)

LEGEND	
SS	PROPOSED SANITARY SEWER
WL	PROPOSED WATER LINE
FM	PROPOSED FORCE MAIN
EX. SS	EX. STORM SEWER
EX. WL	EX. WATER LINE
EX. SS	EX. SANITARY SEWER LINE



GENERAL NOTES	
1.	REFERENCE SANITARY SEWER AND WATER LINE NOTES SHEET C0.1 FOR PIPE MATERIAL REQUIREMENTS.
2.	REFER TO SITE ELECTRICAL PLAN FOR PROPOSED SITE LIGHTING LAYOUT.
3.	REFERENCE MEP PLANS FOR CONTINUATION OF SANITARY AND WATER FACILITIES INSIDE BUILDING.
4.	ALL CLEANOUTS LOCATED WITHIN CONCRETE PAVEMENT TO BE TRAFFIC RATED.

MULTIPLE EXISTING PUBLIC AND PRIVATE UTILITY LINES EXIST ON THIS SITE. THE UTILITY LINES SHOWN ON THESE DRAWINGS REFLECT INFORMATION OBTAINED FROM RECORD DRAWINGS AND MAY NOT INCLUDE ALL EXISTING UTILITIES. CONTRACTOR IS TO USE EXTREME CAUTION DURING ALL CONSTRUCTION ACTIVITIES AND IS SOLELY RESPONSIBLE FOR DAMAGE TO EXISTING FACILITIES.

CALL BEFORE YOU DIG  
TEXAS ONE CALL PARTICIPANTS REQUEST  
72 HOURS NOTICE BEFORE YOU DIG, DRILL  
OR BLAST - STOP CALL  
TEXAS ONE CALL SYSTEM  
1-800-545-6005  
IN HOUSTON  
(713)-223-4567

ALJLindsey

Civil Engineers & Surveyors  
Houston, TX 77066  
281.301.5955  
PRN F-11526

26 SEPTEMBER 2017

A. LESTER JONES  
102152  
REGISTERED  
PROFESSIONAL ENGINEER

UTILITY PLAN

EMERALD GARDENS  
TOWNHOMES  
13520 FURMAN RD

SHEET  
C2.0

REVISIONS

DATE