

APP.		
REVISION		
DATE		No.

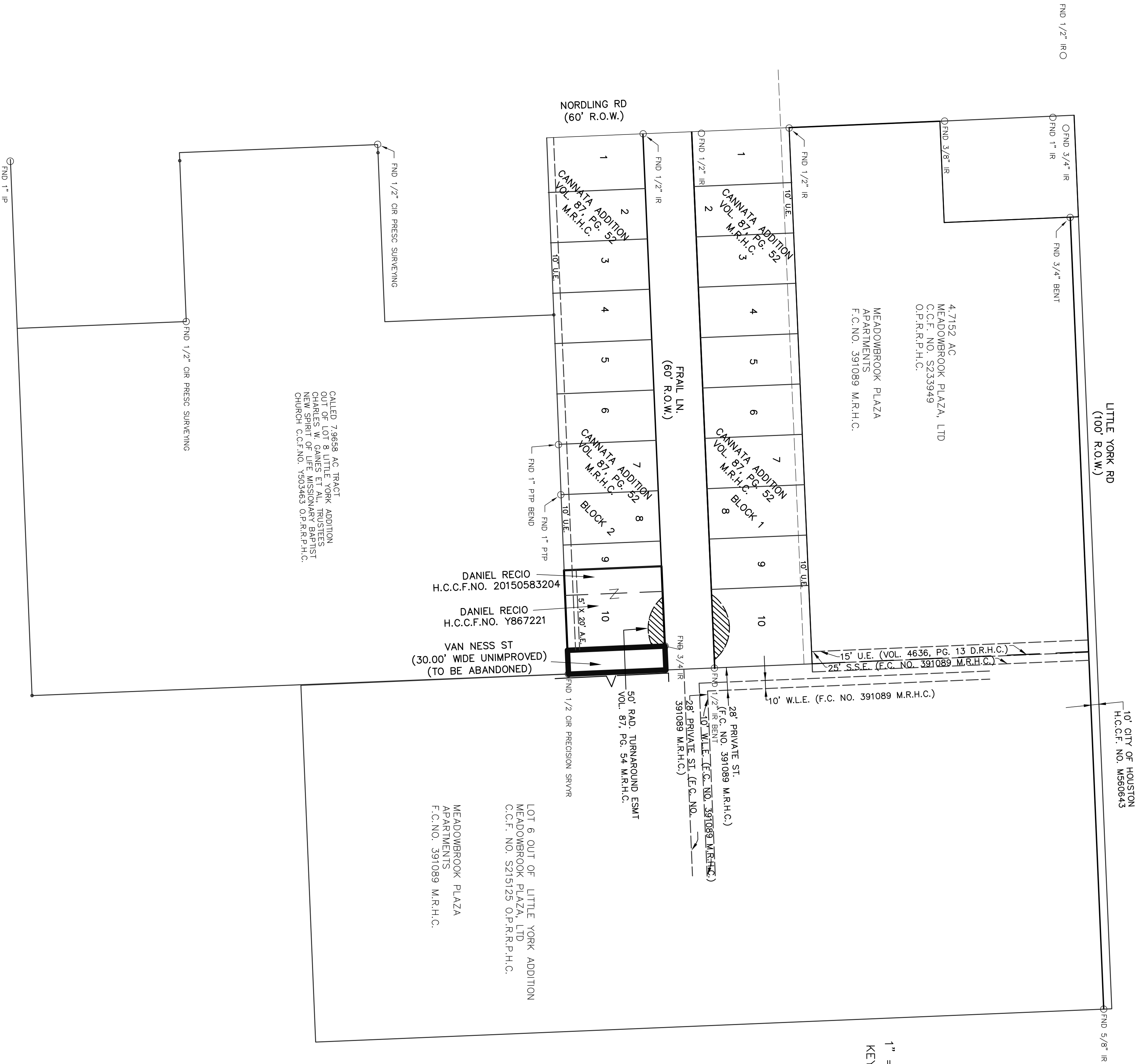
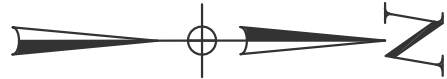
ABBREVIATION LEGEND:

P.O.B.	= POINT OF BEGINNING
P.O.C.	= POINT OF COMMENCING
AC.	= ACRES
SQ. FT.	= SQUARE FEET
FND	= FOUND
IR	= IRON ROD
IP	= IRON PIPE
PTP	= PINCHED TOP PIPE
CIR	= IRON ROD W/CAP
W.L.E.	= WATER LINE EASEMENT
H.C.D.R.	= HARRIS COUNTY DEED RECORDS
M.R.H.C.	= HARRIS COUNTY MAP RECORDS
ESMT	= EASEMENT
C.C.F. NO.	= COUNTY CLERK FILE NO.
A.E.	= AERIAL EASEMENT
O.P.R.R.P.H.C.	= OFFICIAL PUBLIC RECORDS OF REAL PROPERTY OF HARRIS COUNTY

NOTES:

- ABSTRACTING SERVICES FOR SUBJECT TRACT HAVE BEEN PROVIDED BY TITLE HOUSTON HOLDINGS.
- ALL BEARINGS ARE BASED ON TEXAS STATE PLANE COORDINATE SYSTEM SOUTH CENTRAL ZONE 4204 (NAD 83).
- BENCHMARK: ELEVATIONS ARE BASED ON THE NATIONAL SPATIAL REFERENCE SYSTEM (NSRS), AND C.O.H. CONTINUOUS OPERATION REFERENCE STATIONS (CORS) SITES USING REAL TIME KENAMATIC ROVER (NAVD 88, CORS 2011 ADJUSTMENT, GEOID 12B).
- ALL DISTANCES SHOWN ARE SURFACE. COORDINATES SHOWN ARE GRID AND MAY BE CONVERTED TO SURFACE BY APPLYING A COMBINED SCALE FACTOR OF 0.99990837.
- UNDERGROUND UTILITIES SHOWN ON THIS DRAWING ARE BASED ON THE FIELD SURVEY OF SURFACE UTILITY APPURTENANCES AND BEST AVAILABLE INFORMATION. TEXAS ONE CALL UTILITY LOCATE SYSTEM WAS CONTACTED TO LOCATE UNDERGROUND UTILITIES. CONTRACTOR SHALL NOTIFY TEXAS ONE CALL AT 713-223-4567/800-669-4349 AT LEAST 48 HOURS BEFORE PROCEEDING WITH ANY EXCAVATION.

1" = 80' (22" X 34")
KEY MAP NO. 413-S



I hereby certify that this map is a true representation of a survey completed on the ground in accordance with TSPS Standards for Category 1A, Condition II and the facts as found on the ground on the date of the survey performed on July 24, 2017.

John A. Guajardo 12/12/17

John A. Guajardo, R.E.L.S. No. 5945
JAG Engineering, Inc.
9100 Southwest Frwy., Suite 130
Houston, Texas 77074
Telephone (713) 977-7550
Texas Surveying Firm No. 100171-00

JAG ENGINEERING, INC. 9100 SOUTHWEST FRWY., SUITE 130, HOUSTON, TX 77074 (713) 977-7550 FAX (713) 977-7317	
30' WIDE UTILITY EASEMENT ABANDONMENT, CANNATA ADDITION OVERALL LAYOUT	
CITY OF HOUSTON PUBLIC WORKS AND ENGINEERING DEPARTMENT	
APPROVAL	DATE
SURVEY SECTION	RIGHT OF WAY SECTION
KEY MAP No. 413 S	GWS MAP No. 5362C
PARCEL NO. 001	
JOB NO. 17021	