

Harris County Appraisal District



0 100 200

PUBLICATION DATE:
12/22/2017

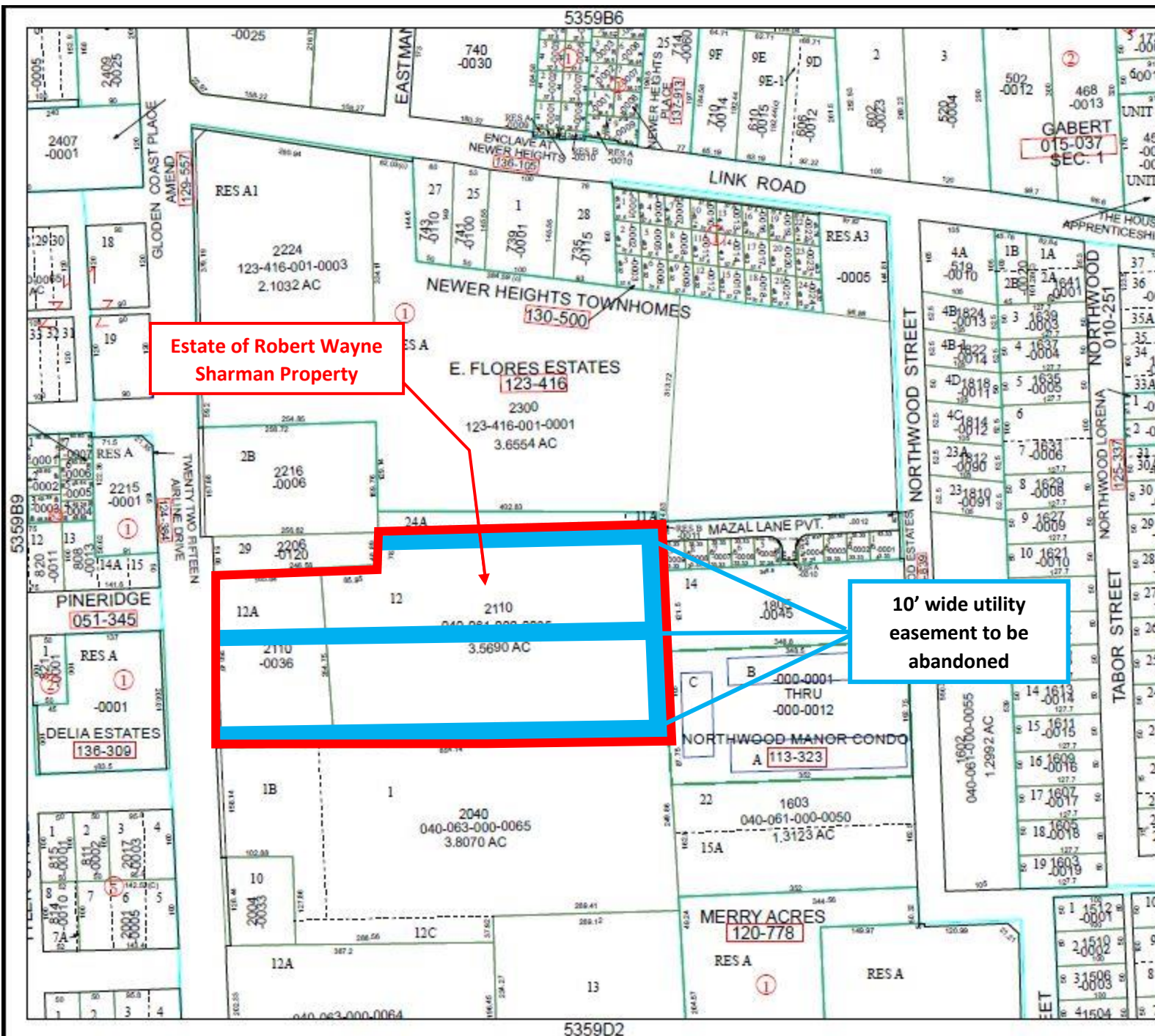
Geospatial or map data maintained by the Harris County Appraisal District is for informational purposes and may not have been prepared for or be suitable for legal, engineering, or surveying purposes. It does not represent an on-the-ground survey and only represents the approximate location of property boundaries.

MAP LOCATION



FACET 5359B

1	2	3	4
5	6	7	8
9	10	11	12



Estate of Robert Wayne Sharman Property

10' wide utility easement to be abandoned