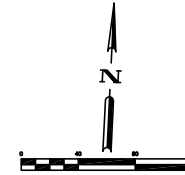


LEGEND

- 38' PUBLIC ALLEY - ABANDONED
VOL. 1A, PG. 114, H.C.M.R.
(ABANDONED BY 1940 ORDINANCE &
38' UTILITY EASEMENT ESTABLISHED)
- 38' PUBLIC ALLEY - C.O.H.
(APPLICATION FOR ABANDONMENT AND
SALE OF STREET OR ALLEY)



HOUSTON HEIGHTS
VOL. 1A, PG. 114, H.C.M.R. ②

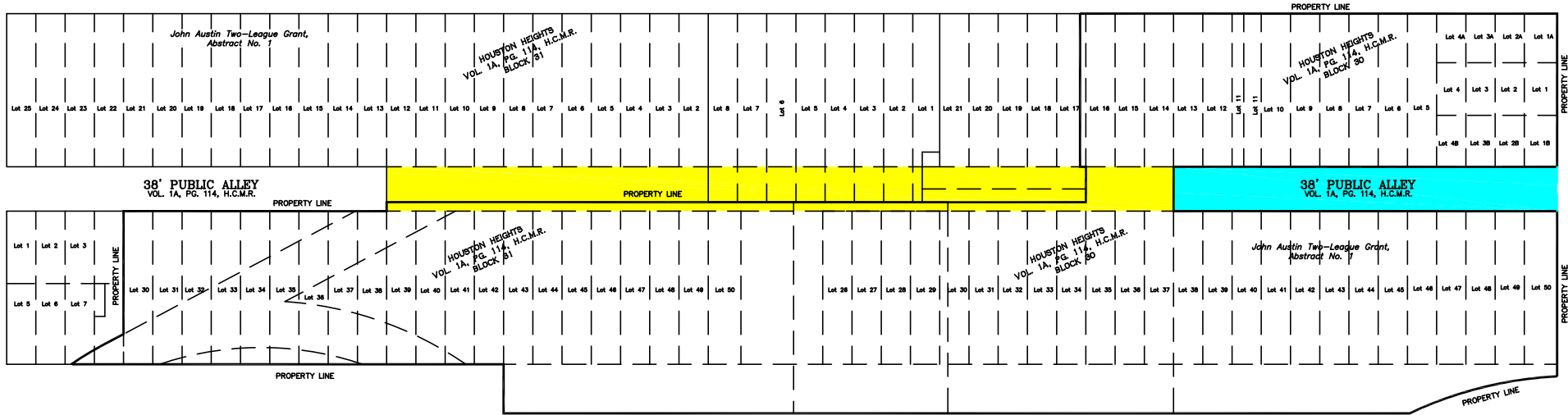
ASHLAND STREET
(70' ROW)
VOL. 1A, PG. 114, H.C.M.R.

HOUSTON HEIGHTS
VOL. 1A, PG. 114, H.C.M.R. ②

WEST 26TH STREET
(70' R.O.W.)
VOL. 1A, PG. 114, H.C.M.R.

NICHOLSON STREET
(70' ROW)
VOL. 1A, PG. 114, H.C.M.R.

RUTLAND STREET
(70' ROW)
VOL. 1A, PG. 114, H.C.M.R.



38' PUBLIC ALLEY
VOL. 1A, PG. 114, H.C.M.R.

38' PUBLIC ALLEY
VOL. 1A, PG. 114, H.C.M.R.

WEST 25TH STREET
(ROW VARIES)
VOL. 1A, PG. 114, H.C.M.R.

ASHLAND STREET
(70' ROW)
VOL. 1A, PG. 114, H.C.M.R.

HOUSTON HEIGHTS
REPLAT NO. 11 ②

EXHIBIT A
38' PUBLIC ALLEY

TERRA 1445 N. LOOP WEST - SUITE 450
HOUSTON, TEXAS 77008
ASSOCIATES, INC. 713-993-0333
CONSULTING ENGINEERS TBPE Registration No. F-003832

DRAWN BY: EJ	DATE: 1" = 40'	PROJECT No. 1056-1003
FILE NAME: JAV	SCALE: OCTOBER 2018	SHEET 1 OF 1